

# INNOVATE WITH CSDI

Improving Decision-Making Through Spatial Data Analysis

# UTILISE THE CSDI DATA

**CSDI**  
Common Spatial Data Infrastructure Portal

Search Dataset e.g. School...

**FRAMEWORK SPATIAL DATA THEMES**

- Address
- Administrative Area
- Building
- Coordinates Reference System
- Geographic Name
- Land Parcel
- Transportation

**DATASET CATEGORIES**

All Categories >

- Climate and Weather
- Commerce and Industry
- Development
- Education
- Election
- Environment
- Geography
- Health
- Housing
- Labour, Community and Social Welfare
- Land Information
- Law and Security
- Population
- Recreation and Culture
- Sports

**SEARCH CATALOG** e.g. Transportation...

Framework Spatial D... X Clear All

17 items Found Sort By Relevance

**Filtered by**

- GeoSpatial Coverage**
- CSDI Data Themes**
  - Address FSDT (1)
  - Administrative Area FSDT (2)
  - Building FSDT (1)
  - Coordinates Reference System FSDT (1)
  - Geographic Name FSDT (2)
  - Land Parcel FSDT (6)
  - Transportation FSDT (4)
- CSDI Data Categories**
  - Land Information (6)
  - Transportation (4)
  - Development (3)
  - Geography (2)
  - Housing (2)
- Data Providers**
  - Lands Department (11)
  - Transport Department (3)
  - Home Affairs Department (1)
  - Office of the Government Chief Information Officer (1)
  - Planning Department (1)

**District Boundary**

The number of Districts declared is 18. The District Administration Scheme commenced in 1982 with the establishment of a District Council (formerly known as District Board) in each of the districts in Hong Kong. The aim of the scheme is to achieve a more effective coordination of government activities in the provision of se...

Home Affairs Department [Preview in Map](#)

**Coordinate Reference System**

The Coordinate Reference System maintained by Lands Department includes both horizontal and vertical datums. HK1980 Geodetic Datum and HK1980 Grid System are the horizontal datum while the Hong Kong Principal Datum (HKPD) is the vertical datum.

Lands Department [Preview in Map](#)

**Tertiary Planning Unit**

Tertiary Planning Unit Adopted in 2021 Population Census For town planning purpose, the whole territory of Hong Kong is divided into 292 Tertiary Planning Units (TPU) in the 2021 Population Census. These TPUs are aggregated under 52 Secondary Planning Units (SPUs) at the next higher level. The SPUs are further grouped under...

Planning Department [Preview in Map](#)

**Traffic Flow Census**

The Traffic Flow Census provides vehicle flow information of Hong Kong. These statistical data are collected through the counting at the counting stations. The dataset includes cordon lines, screenlines and the location of the counting stations and their survey data.

Transport Department [Preview in Map](#)

**Place Name**

The database stores names of settlement feature (e.g. Area, District, Village and Town), hydrographic features (e.g. Bay, Channel, Harbour, River, Strait and Stream), and topographic features (e.g. Cape, Cave, Hill, Island, Islands, Pass, Peninsula, Reef, Rock and Valley) of Hong Kong. These place names are being adopted in...

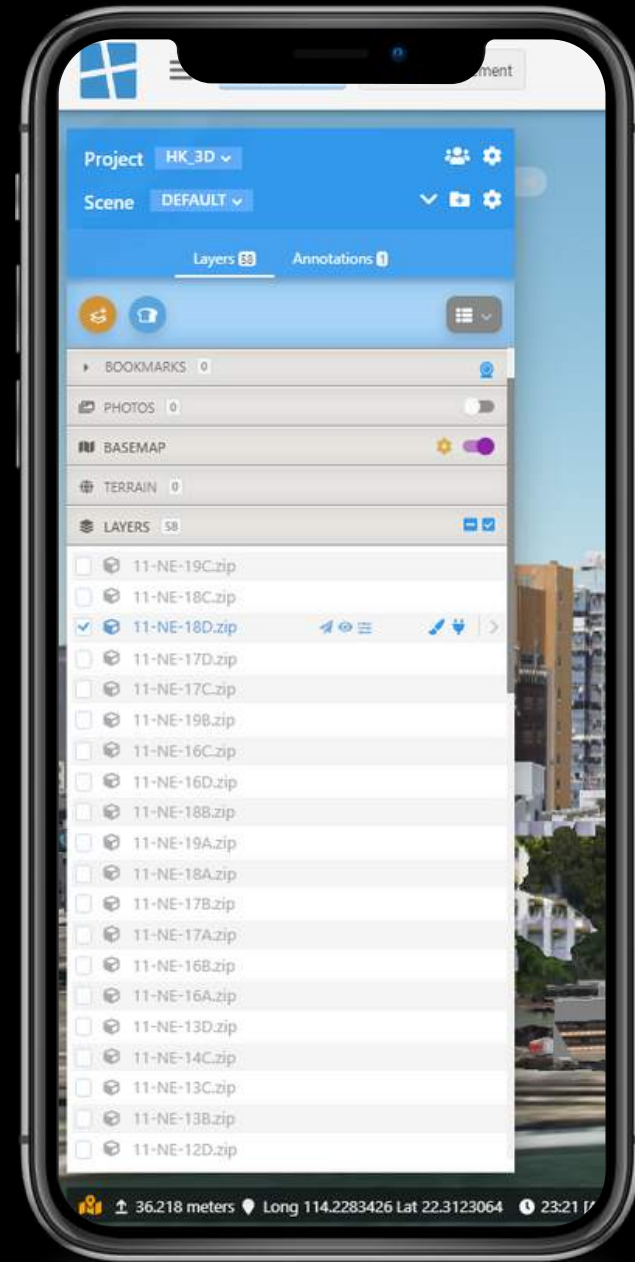
Lands Department [Preview in Map](#)

# IMPROVE DECISION MAKING

via GX-GeoShare  
Spatial Data Analysis



# GX GEOSHARE



Map Data Platform

Organise your digital assets



Digital Twin Display

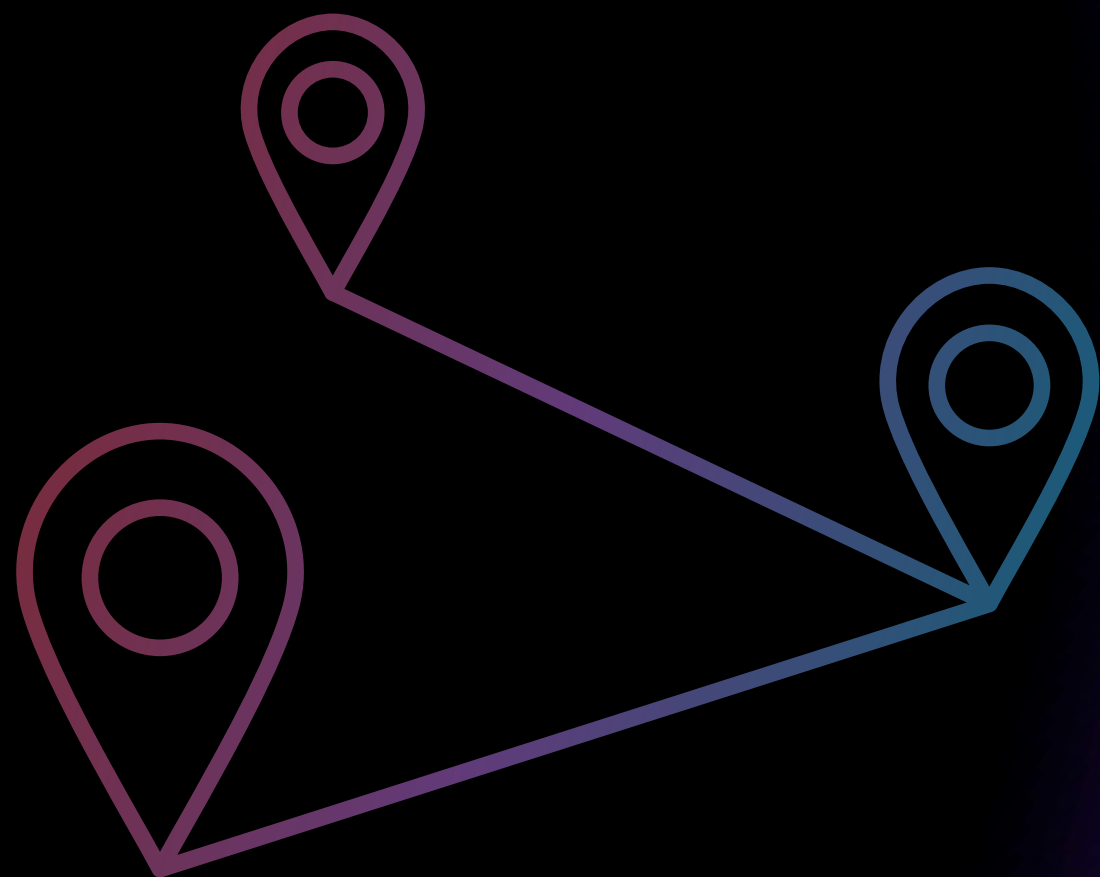
Dynamic virtual simulation



Data Visualisation

Analysis and testing

# General GeoDatabase Design



- Administrative
- Rights and Interests
- Site Addresses - uses and restrictions
- Ownership and Tax Parcels
- Parcel Framework



My Projects

Data Management



Project 3D\_DEMO

Scene DEFAULT

Layers 1 Annotations 2

ENVIRONMENT

ADDITIONAL FILES 0

BOOKMARKS 0

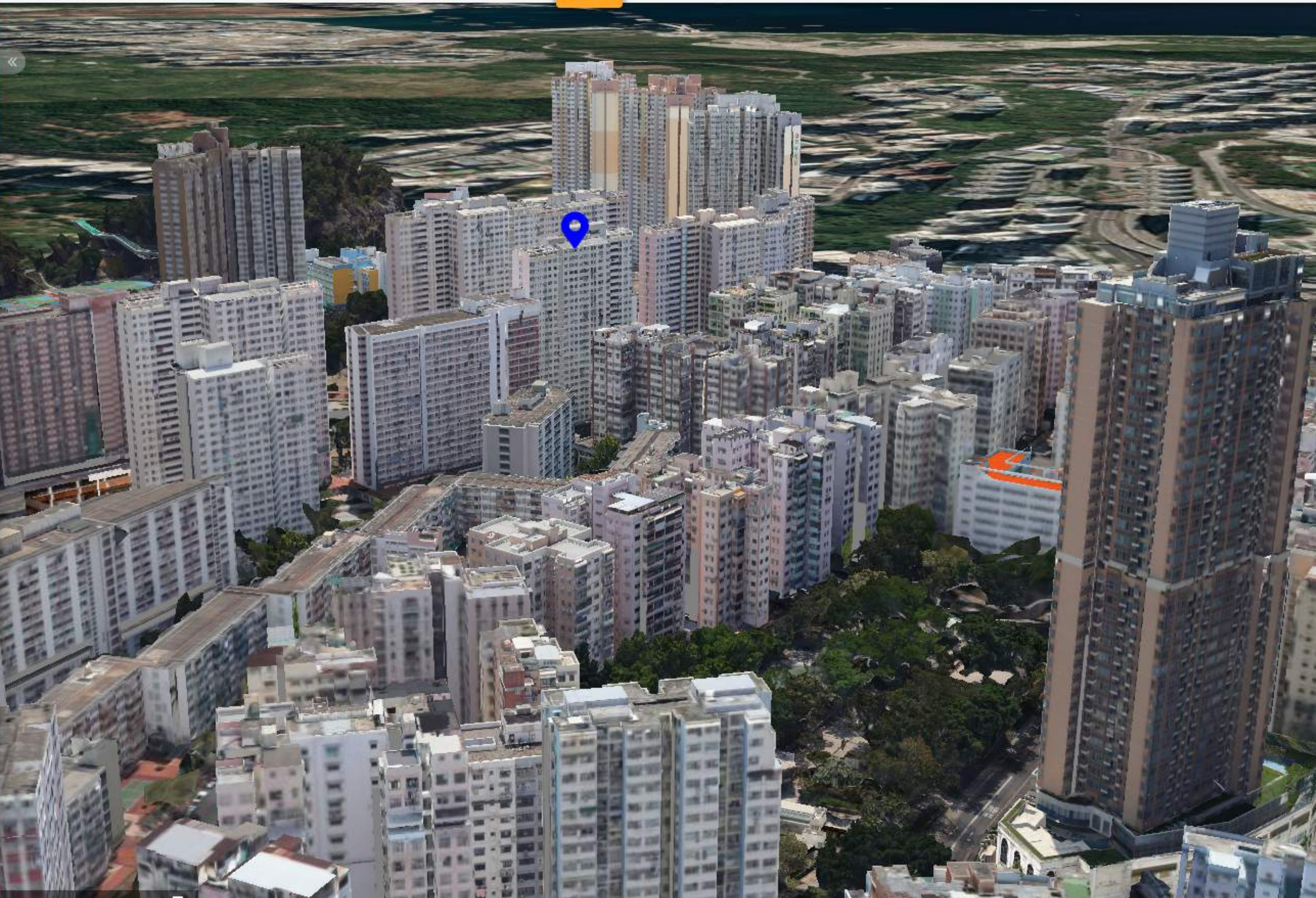
PHOTOS 0

BASEMAP

TERRAIN 0

LAYERS 1

11-NE-18D.zip



# Enhanced Interoperability in the Metaverse

Immersive technology

Navigate the digital twin metaverse

Avatars

Create your identity

Communication tools

Express your ideas and leave remarks

Improved workflow

Enable higher efficiency in project design



# POTENTIAL FOR CORPORATES & CREATIVES



●  
Agricultural  
Research

●  
City / Town  
Development

●  
Business  
Strategy

●  
Metaverse &  
Gamification





*Thank You*

GEO.XPERT